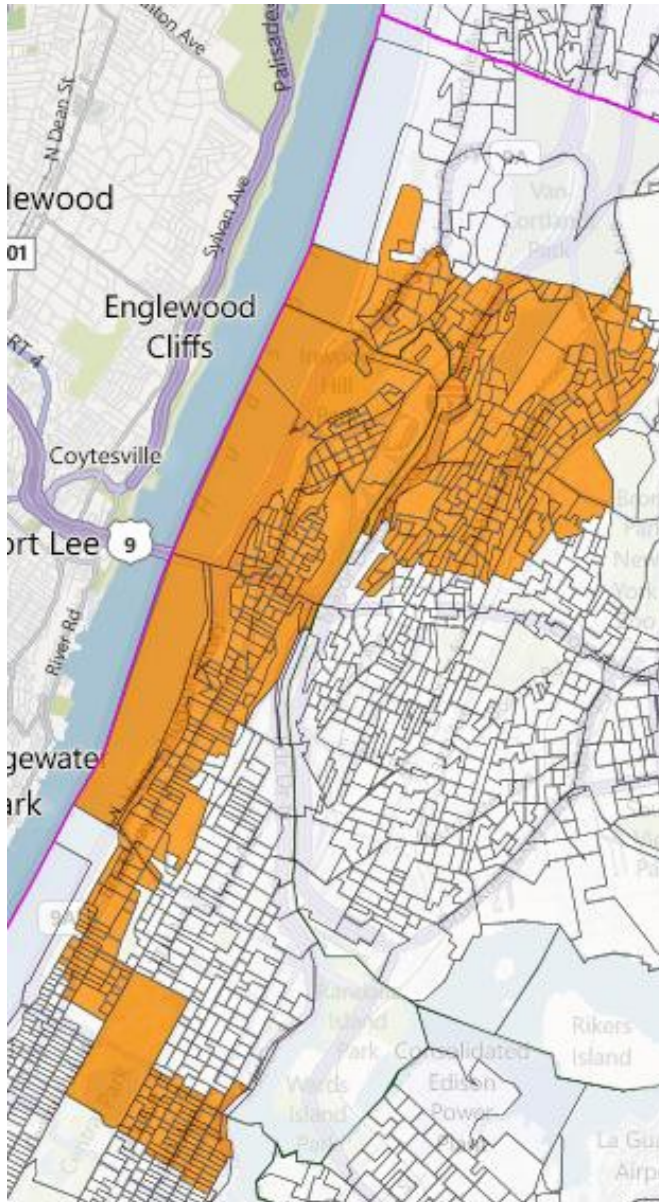
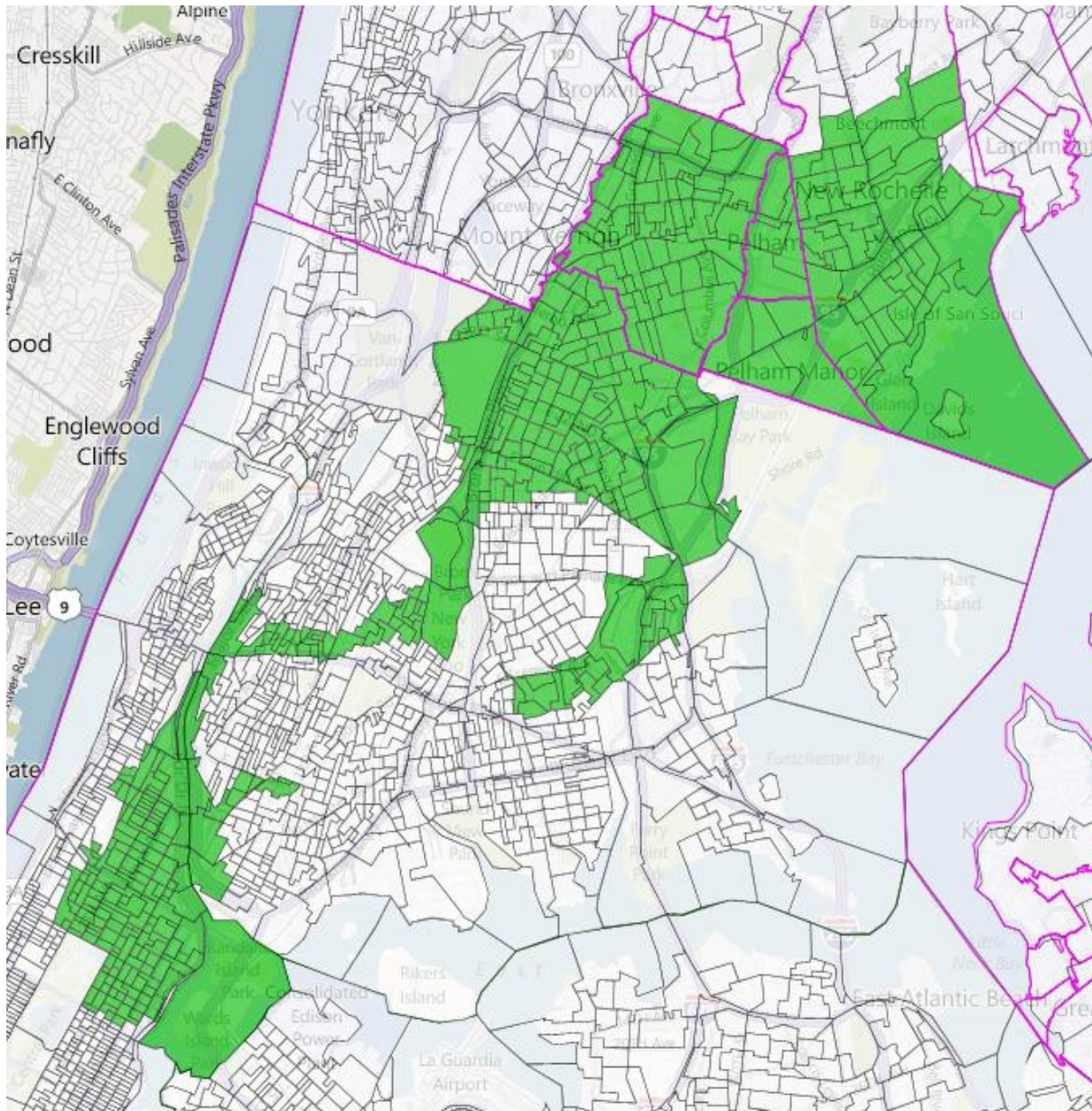


Congressional District 14



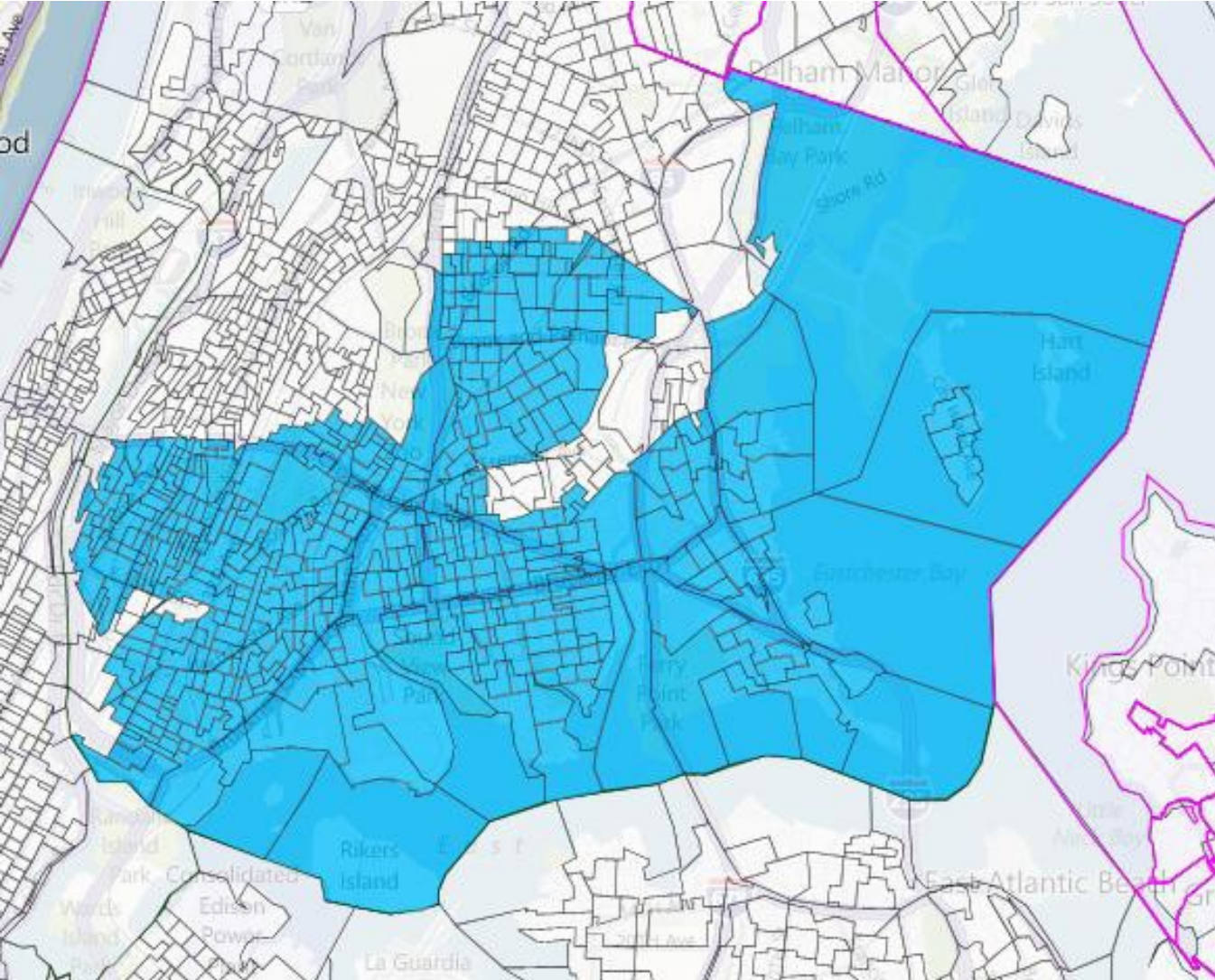
CD 14		
All	Pop	%
Tot	717,900	
Wh	169,673	(23.6)
Bl	102,924	(14.3)
Hisp	395,083	(55.0)
Asn	36,279	(5.1)
Nat	1,254	(0.2)
Oth	12,687	(1.8)
18+	Pop	%
Tot	561,561	
Wh	148,763	(26.5)
Bl	80,395	(14.3)
Hisp	291,572	(51.9)
Asn	31,076	(5.5)
Nat	874	(0.2)
Oth	8,881	(1.6)

Congressional District 15



CD 15		
All	Pop	%
Tot	717,626	
Wh	93,756	(13.1)
Bl	338,921	(47.2)
Hisp	242,093	(33.7)
Asn	24,343	(3.4)
Nat	1,926	(0.3)
Oth	16,587	(2.3)
18+	Pop	%
Tot	546,847	
Wh	81,077	(14.8)
Bl	260,919	(47.7)
Hisp	171,935	(31.4)
Asn	19,605	(3.6)
Nat	1,398	(0.3)
Oth	11,913	(2.2)

Congressional District 16



CD 16		
All	Pop	%
Tot	718,039	
Wh	72,663	(10.1)
Bl	189,385	(26.4)
Hisp	421,296	(58.7)
Asn	21,105	(2.9)
Nat	1,774	(0.2)
Oth	11,816	(1.6)
18+	Pop	%
Tot	520,943	
Wh	61,764	(11.9)
Bl	137,768	(26.4)
Hisp	295,787	(56.8)
Asn	16,087	(3.1)
Nat	1,144	(0.2)
Oth	8,393	(1.6)